

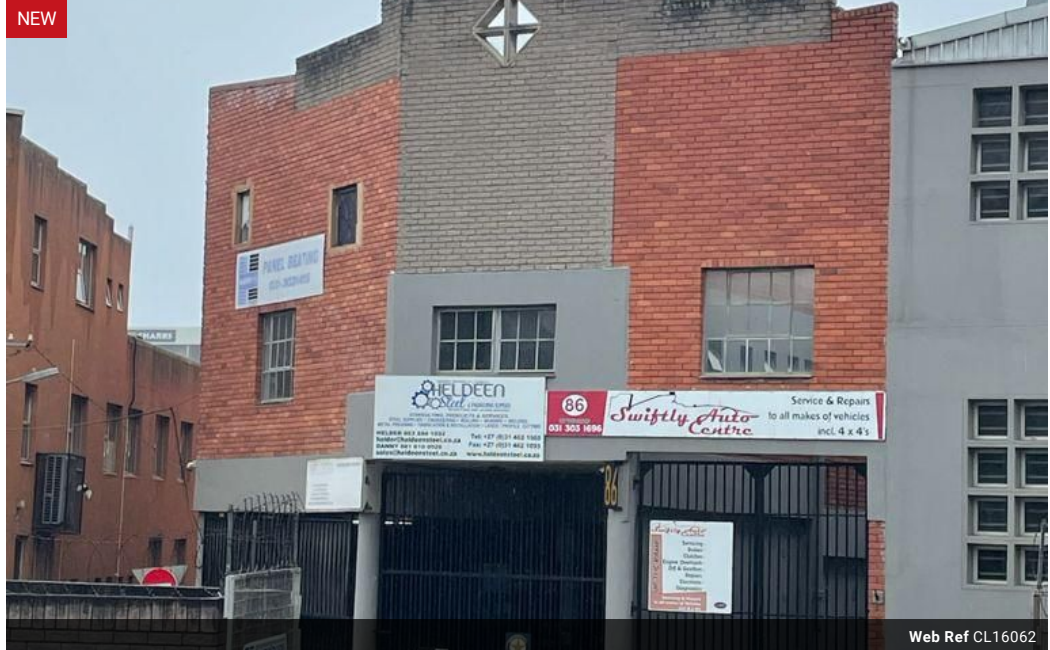


Lee-Ann Albers
081 514 7389
leeann@koppcommercial.co.za

Contact Kopp Commercial Head Office

031 3120625

9 Davallen Avenue
Glenashley
Durban North
4051



Web Ref CL16062



R6,500,000



Industrial Property For Sale in Windermere

Kopp Commercial is pleased to offer the following industrial property for sale in Windermere

- GLA 766m²
- Erf Size: 586m²
- Ground Floor Approximately 320m² with 110m² outside area
- Top Floor Approximately 456m²
- All units are currently tenanted

For more information or to view please contact Lee-Ann Albers on 081 514 7389.

For more information or to view please contact Lee-Ann Albers. Your area specialist in the northern suburbs.

Looking for Space in and around the Morningside area, contact Kopp Commercial today and let us find your ideal Premises for your industrial requirements. Alternatively should you have premises to let or for sale, contact Kopp Commercial to assist you in finding a suitable TENANT/PURCHASER.

Features

Title	Freehold		
Zoning	Industrial		
Interior		Sizes	
Power 3 Phase	Yes	Floor Size	776m ²
		Land Size	586m ²