



Lee-Ann Albers  
081 514 7389  
leeann@koppcommercial.co.za

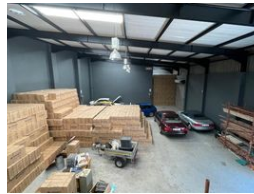
Contact Kopp Commercial Head Office

031 3120625

9 Davallen Avenue  
Glenashley  
Durban North  
4051



Web Ref CL15203



R28,552,500

0 38

## Commercial Property For Sale in Windermere

Kopp Commercial is pleased to offer this commercial property for sale.

- Erf Site 2381m<sup>2</sup>
- GLA 2 553.6m<sup>2</sup>
- 4 storey building (1959.1m<sup>2</sup>)
- Ground Floor 538m<sup>2</sup>
- First Floor 473.7m<sup>2</sup>
- Second Floor 473.7m<sup>2</sup>
- Third Floor 473.7m<sup>2</sup>
- 3 Phase Power, 300 Amps for the entire building and warehouse
- Separate Warehouse of approximately 594.5m<sup>2</sup>
- Yard approximately 1395m<sup>2</sup> with 38 parking bays
- Tenants have been in the premises for many years, no existing leases in place.

For more information or to view please contact Lee-Ann Albers.

Umhlanga Rocks, Mount Edgecombe, La Lucia, Briardene, Riverhorse Valley, Springfield Park, Phoenix, Verulam, Ottawa, Durban

## Features

<b>Title</b>	Freehold			
<b>Zoning</b>	Commercial			
<b>Interior</b>		<b>Exterior</b>		<b>Sizes</b>
Air Conditioning	Yes	Security	Yes	Floor Size
Power 3 Phase	Yes	Open Parking Bays	38	Land Size
Power Amps	300			Building Height
				1,954m <sup>2</sup>
				2,381m <sup>2</sup>
				5m