

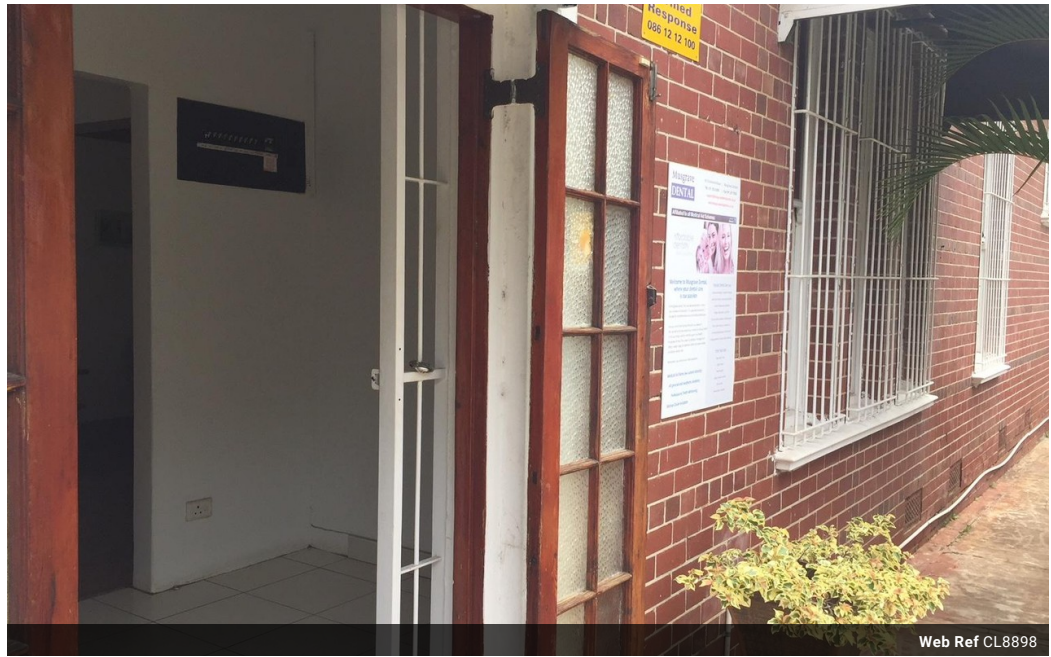


**Lee-Ann Albers**  
 081 514 7389  
 leeann@koppcommercial.co.za

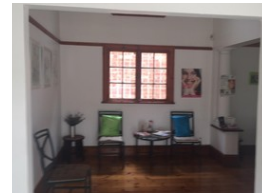
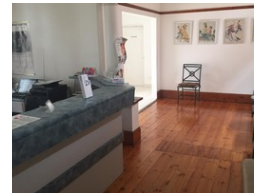
Contact Kopp Commercial Head Office

031 3120625

9 Davallen Avenue  
 Glenashley  
 Durban North  
 4051



Web Ref CL8898



R2,600,000

Monthly Rates R5,178 Excl. VAT

0 3

## 167m<sup>2</sup> Commercial Property FOR SALE in Berea

Kopp Commercial is pleased to offer this 167 sqm property situated directly opposite the new Embury College and Musgrave Centre with road frontage and road visibility for signage. Comprises of a large reception or open plan office, 2 offices, 2 ablutions, big kitchen, private outside courtyard and a 27sqm outbuilding. Outbuilding can be used for storage or as an additional office with its own ablutions. Property is fully fenced and airconditioned.

For more information or to view please contact Lee-Ann Albers. Your area specialist in the northern suburbs.

Looking for Space in and around the Musgrave North area, contact Kopp Commercial today and let us find your ideal Premises for your commercial requirements. Alternatively should you have premises to let or for sale, contact Kopp Commercial to assist you in

## Features

**Zoning** Commercial

### Interior

Air Conditioning Yes  
 Power 3 Phase Yes

### Exterior

Open Parking Bays 3

### Sizes

Floor Size 167m<sup>2</sup>